



Ngāti Kahungunu
Ki Wairarapa-Tāmaki
Nui ā Rua Trust

NEWSLETTER OCTOBER 2016

Hapu Karanga Elections—URGENT NOTICE

The following hapu karanga are calling for nominations to the position of hapu karanga Trustee on the Ngāti Kahungunu ki Wairarapa-Tāmaki nui ā Rua Trust (NKKWTNAR Trust). These elections are to replace vacant Trustee positions which are currently being filled by alternate Trustees. Nomination packs can be obtained from the Trust Office, or by contacting the Returning Officer on 06 879 6202, on mobile 027 488 0668, or by emailing office@potielectionservices.nz. **Nominations must be lodged by 7 November 2016 at 5pm** to be valid. Vacant positions are:

- Pāpāwai Hapu Karanga – one (1) position
- Te Ore Ore Hapu Karanga – one (1) position
- Tamaki Nui ā Rua Hapu Karanga – two (2) positions
- Hurunui o Rangi Hapu Karanga – one (1) position

Post Settlement Governance Entity (PSGE)

With the AIP signed (7 May 2016), the Trustees are working towards a Deed of Settlement which will hopefully be presented for ratification in the first half of 2017. In preparation, a PSGE needs to be established to receive and manage assets and represent NKKWTNAR in any post settlement relationship redress. In the August newsletter we detailed the Crown's criteria for a PSGE, and the Trust's proposed PSGE structuring principals. A summary of these are outlined again below for your reference.

NKKWTNAR's proposed PSGE structuring principals include that the entity be:

- Consistent with tikanga
- Affordable
- Simple
- Representative
- Accountable
- Flexible
- Able to generate income
- Able to return benefits to members

The Crown's criteria for recognising a PSGE are that it:

- Represents all members of NKKWTNAR
- Has transparent decision-making and dispute resolution procedures;
- Be fully accountable to the whole of NKKWTNAR; and
- Provide that the beneficiaries of the settlement and the beneficiaries of the PSGE are identical when the settlement assets transfer to the PSGE.

PSGE Structure

Hui were held around the rohe, and feedback received, made it clear that one key issue was how people would be elected as representatives on the PSGE. Over 90% of submissions favoured the status quo – the existing hapu karanga structure which is made up of nine hapu karanga represented by twelve Trustees. This structure was approved by the Crown and elections are on the basis of hapu karanga as follows:

- Ākura – One (1) Trustee
- Tamaki nui ā Rua – Four (4) Trustees
- Te Ore Ore Marae – One (1) Trustee
- Hurunui-o-Rangi Marae – One (1) Trustee
- Pāpāwai Marae – One (1) Trustee
- Te Hika o Pāpāuma ki Whakataki Marae – One (1) Trustee
- Ngāi Tumapūhia-a-Rangi – One (1) Trustee
- Wairarapa Moana – One (1) Trustee
- Ngāti Hinewaka – One (1) Trustee

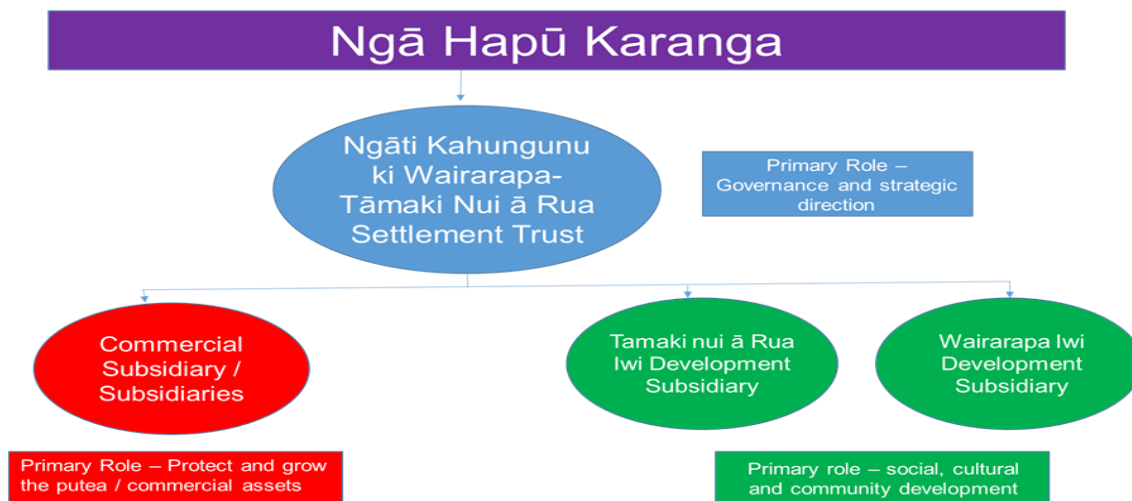


Coastal View: Akitio Beach—Tamaki Nui ā Rua

Postal Address: PO Box 756, MASTERTON ~ **Physical Address:** 189 Queen Street Rear, MASTERTON ~
Freecall: 0800 KKWTRN (0800 559 867) ~ **Phone:** 06 216 1277 (Masterton & Carterton) ~
Email: admin@kkwtrn.org.nz ~ **Website:** www.kkwtrn.org.nz

PSGE Structure (cont...)

A diagram of the proposed PSGE and its subsidiaries is set out below (explanations of each section is detailed in the full booklet – available on the NKKWTNAR Trust website).



Ratification Process & Elections

With acceptance of the PSGE structure, the ratification process can begin. There are two (2) resolutions you are being asked to vote on and these are:

Resolution One: I, as a member, of Ngāti Kahungunu ki Wairarapa-Tamaki nui ā Rua, agree that the Ngāti Kahungunu ki Wairarapa-Tamaki nui ā Rua Settlement Trust will be the post-settlement governance entity to receive and manage all the historical Treaty of Waitangi settlement redress on behalf of Ngāti Kahungunu ki Wairarapa-Tamaki nui ā Rua.

Resolution Two: I, as a member, of Ngāti Kahungunu ki Wairarapa-Tamaki nui ā Rua, agree that the Ngāti Kahungunu ki Wairarapa-Tamaki nui ā Rua Settlement Trust will take over the mandate to negotiate for the settlement of Ngāti Kahungunu ki Wairarapa-Tamaki nui ā Rua historical claims.

Information booklets and voting forms are being posted out to each registered person by the independent Returning Officer.

Voting can be either:

- Postal
- By secure ballot at one of the ratification hui, or
- Via internet

All voting closes 4pm on 27 November 2016, at the conclusion of the Special General Meeting (Postal votes marked before 27 November and received by 5pm 30 November will be counted).

Hui will be held around the rohe during the election period to ensure you are informed in person and have the opportunity to ask questions about the PSGE and ratification process. Dates and venues are outlined below:

NKKWTNAR PSGE RATIFICATION HUI VENUES			
Date	Venue	Address	Time
Thur 17 Nov 2016	Te Taiwhenua o Heretaunga	821 Orchard Street, Hastings	6pm-8pm
Fri 18 Nov 2016	Tararua Business Network	40 Denmark Street, Dannevirke	6pm-8pm
Mon 21 Nov 2016	James Cook Hotel	147 The Terrace, Wellington	6pm-8pm
Tues 22 Nov 2016	Copthorne Hotel Auckland City	150 Anzac Avenue, Auckland	6pm-8pm
Wed 23 Nov 2016	The Ambassador Hotel	86 Ulster Street, Hamilton CBD, Hamilton	6pm-8pm
Thur 24 Nov 2016	Pouakani Marae	Lake Road, Mangakino	6pm-8pm
Fri 25 Nov 2016	The Commodore Hotel	449 Memorial Avenue, Christchurch	6pm-8pm
Sun 27 Nov 2016	Waiata House	27 Lincoln Road, Masterton	1pm-3pm

Note: Te Puni Kokiri will be in attendance as independent Crown observers.

Where to find further information:

The PSGE Booklet outlines in detail, the proposed structure for the Ngāti Kahungunu ki Wairarapa-Tamaki nui ā Rua Settlement Trust (“NKKWTNAR Settlement Trust”), a private trust with subsidiaries to undertake both commercial and iwi development activities. The NKKWTNAR Settlement Trust will be responsible for completing the settlement negotiations with the Crown, administering the settlement and, through its subsidiaries, the commercial, social and cultural development of NKKWTNAR. The booklet also details the voting process, and explains what effect it will have if it is passed and discusses the next steps.

You can obtain copies of this booklet and the full draft Trust Deed from the NKKWTNAR Trust website: www.kkwtnr.org.nz/
Copies will also be available at:

- The Trust office, 189 Queen Street (Rear), MASTERTON
- The Kahungunu ki Tamaki Nui a Rua Trust office, 171 High Street, DANNEVIRKE
- Te Puni Kōkiri office, Hastings: Taikura House, 304 Fitzroy Avenue, HASTINGS
- Te Puni Kōkiri office, Palmerston North: 109 Princess Street, Palmerston North
- Each of the ratification hui (as outlined on page 2)

Trustee Profile—Bryan Te Huki

Ko Ruahine Te Maunga
Ko Manawatu Te Awa
Ko Takitimu Te Waka
Ko Ngati Kahungunu Te Iwi
Ko Whiti Te Ra Te Marae
Ko Bryan Te Huki Ahau

Kia ora Whanau



Currently I am one of the four trustees elected to represent Tamaki Nui A Rua. I feel privileged to be doing this job as I have a large Whanau to respond too and hopefully this settlement will meet and exceed their expectations. As a descendent of Ned and Rose (Gardner) Te Huki on my Dads (Bucky) side, and Terry Putaka, Paa Tawhai and Molly Tawhai on my Mums (Moana) side, I will always represent my people to the best of my ability.

I write this profile with pride and honour and profess to everyone that the trust and more importantly the negotiators are striving to get the best settlement they possible can and will always be directed by what the people want. As a Father of five kids (four boys and a princess!!) and married to the Queen (since my girls a princess) this settlement will go a long way towards supporting and creating a future my Kahungunu kids and all Kahungunu kids can achieve and fulfil their dreams.

Kia ora
Bryan Te Huki

**TO HAVE YOUR SAY IN THEY UPCOMING ELECTIONS, IF YOU HAVE MOVED RECENTLY
PLEASE REMEMBER TO CONTACT THE OFFICE TO UPDATE YOUR ADDRESS!**

Freecall: 0800 KKWTONR (0800 559 867) ~ **Phone:** 06 216 1277 (Masterton & Carterton) ~
Email: admin@kkwtnr.org.nz ~ **Website:** www.kkwtnr.org.nz